

AL-NVR5160-24DRAIDHS V2.0

160CH 24SATA ULTRA SMART INTELLIGENT RAID NVR

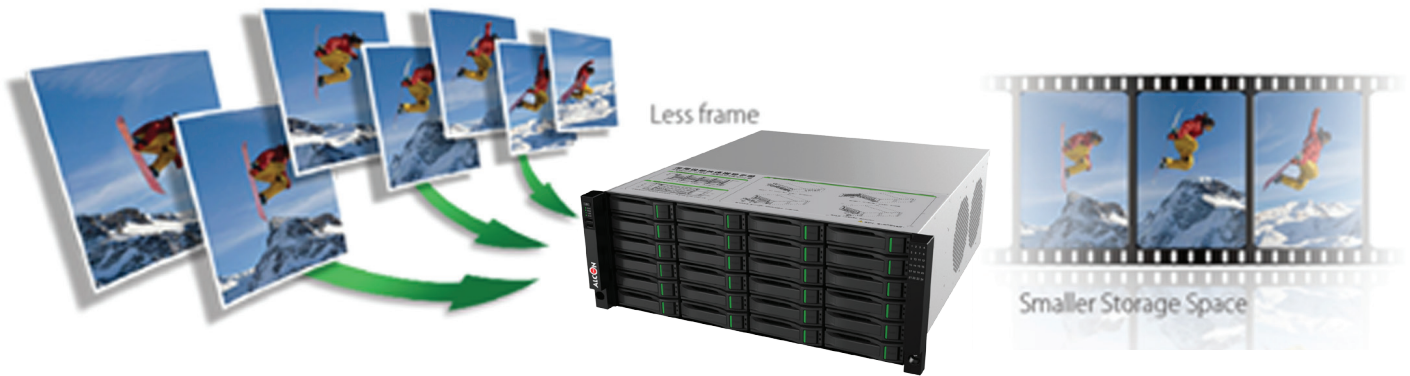
- 4U front panel HDD slots design, support up to 24 HDDs
- Support centralized storage, decoding, forwarding and management of IP cameras, stream NVRs, NVRs and decoders, up to 160 channels
- Support 2 HDMI & 1VGA output interfaces and 18 1080P decoding
- Linux OS embedded operating system
- Support web management UI
- Video input bandwidth 512M, output bandwidth 400M; Video recording channel 256/forwarding channel 200 (Disable face recognition)
- Support local video storage, NTP function
- Support RAID 0/1/5/6/10/50/60
- Able to operate the configuration and monitor the status of disk and RAID group by adopting visible management UI
- Able to conduct human, vehicle, attendance, device and access control
- Able to conduct face search
- Able to conduct early warning linkage



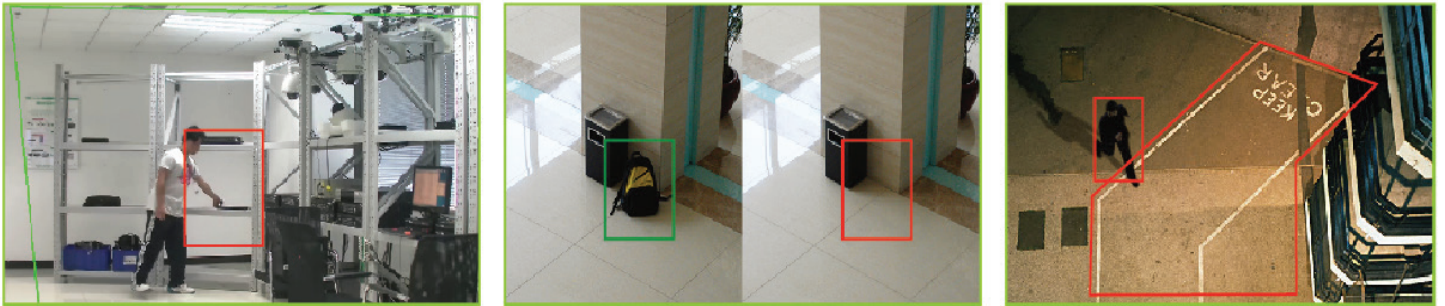
NETWORK VIDEO RECORDER

The Alcon AL-NVR5160-24DRAIDHS V2.0 is for all-in-one NVR that combines Alcon's powerful smarter generation equipment which support video wall template configuration and video switch. It is an intelligent network video recorder which supports up to 160 IP camera input and recording for centralized managed control room solution. Which able to conduct human, vehicle, attendance, device and access control. It Supports any 3rd party OEM IP camera with ONVIF compliance. The Alcon AL-NVR5160-24DRAIDHS V2.0 also supports linkage of VCA functions. The AL-NVR5160-24DRAIDHS V2.0 unique design provides both powerful storage and advanced centralized video management capabilities.

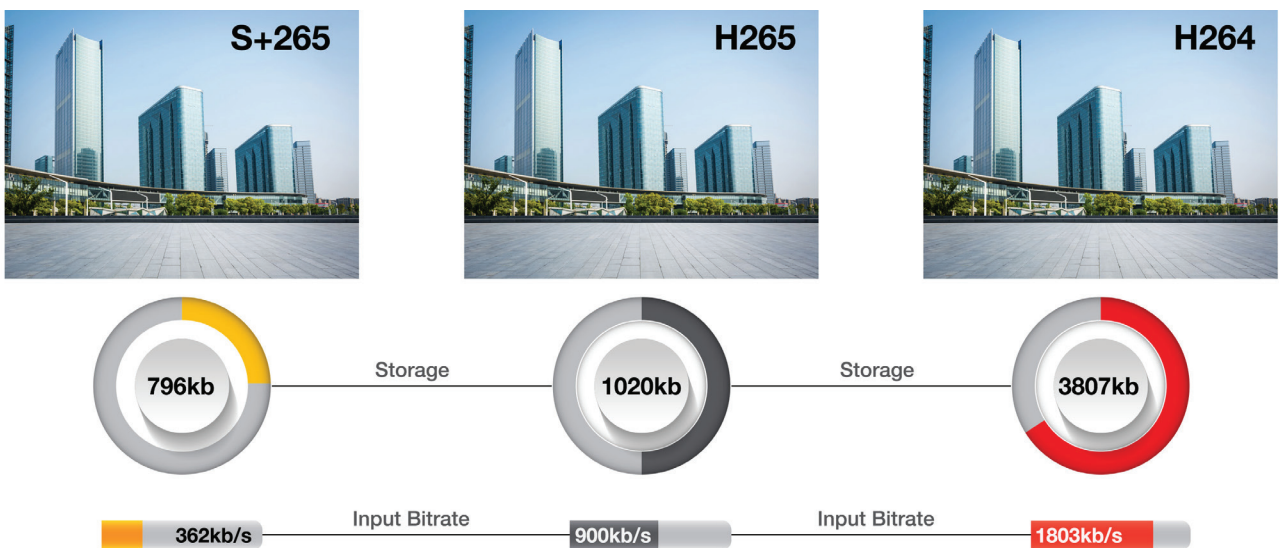
SMART RECORDING



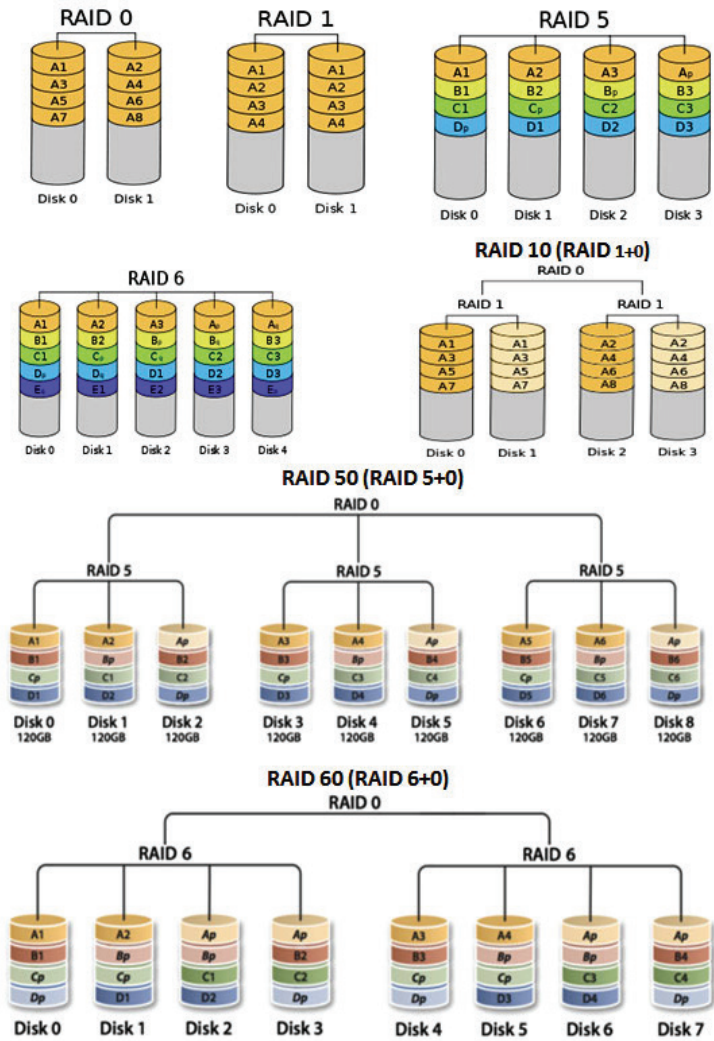
SMART ANALYSIS



BANDWIDTH AND DISK SPACE



S+265 can save approximate 50% bitrate than H.265 technology, saves 70%-80% bandwidth compared with H.264



RAID (REDUNDANT ARRAY OF INDEPENDENT DISKS)

Originally Redundant Array of Inexpensive Disks) is a data storage virtualization technology that combines multiple physical disk drive components into one or more logical units for the purposes of data redundancy, performance improvement, or both. Alcon premium series RAID enabled NVRs are coming with 6 different RAID levels JBOD, RAID 0, RAID 1, RAID 5, RAID 6, RAID 10, RAID 50, RAID 60 (>0°C, Each Raid Group Supports up to 100Mbps Input).

- **JBOD**(Just a Bunch Of Disks) means that your data is on single, stand-alone hard drives. If a one of your JBOD disks fails, the data on that disk is probably lost.
- **RAID 0** – Striping it can perform higher than the single-disk.
- **RAID 1** – Mirrored pair contains two disks.
- **RAID 5** – Striping with parity RAID 5 requires at least three disks.
- **RAID 6** – Striping with double parity it requires minimum four disks.
- **RAID 10** – Combining mirroring and striping, it requires a minimum of four drives.
- **RAID 50** – RAID 50, also called RAID 5+0, combines the straight block-level striping of RAID 0 with the distributed parity of RAID 5. As a RAID 0 array striped across RAID 5 elements, minimal RAID 50 configuration requires six drives.
- **RAID 60** – RAID 60, also called RAID 6+0, combines the straight block-level striping of RAID 0 with the distributed double parity of RAID 6, resulting in a RAID 0 array striped across RAID 6 elements. It requires at least eight disks.



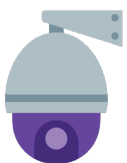
DEVICE MANAGEMENT

- Supports management of IP cameras, NVRs and network video encoder/decoders
- Supports configuration of device information and account authority
- Supports detection of device status



VIDEO PREVIEW

Supports auto switch of main and second stream, live windows can be drag to form a large single window. Live windows can be divided into 4/6/8/10 mode or 1-5/1-7 consist of main/second stream. The number of screens per row/column can be customized as well. Supports electronic zoom, image capture. Supports switch by channel, group and all, users can customize switch plan



PTZ CONTROL

Supports pan tilt and zoom control including 8 directions control, zoom/aperture/focus settings, preset settings, wiper control and 3D positioning



VIDEO MANAGEMENT

Supports storage template that users can easily arrange start time, end time, week time and recording duration



VIDEO PLAYBACK

- Supports device storage/centralized storage/local storage and multiple method for searching video.
- Supports timing video recording, playback, video download, image capture, multi-speed playback in NVR.



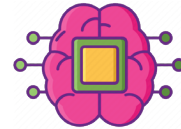
VIDEO WALL

Supports video wall template configuration and video switch.



EVENT MANAGEMENT

Supports multiple alarm types and linkage of alarm input and output interfaces. Events can be prioritized by importance.



INTELLIGENT ANALYSIS

Supports linkage of VCA functions



USER MANAGEMENT

Supports user account management like setting authority and expiration time



ALARM LINKAGE

Supports linkage of alarm output, video recording, sound, video wall, e-map, image capture and preset of PTZ



E-MAP

Supports using super high-resolution picture as e-map background. Supports multiple tiled maps and different surveillance icons overlay on maps



LOG MANAGEMENT

- Supports recording log like adding, deleting and modifying for each module independently
- Supports searching and exporting log information for each module



DECODING

- Support 2 HDMI& 1VGA output interfaces and 18 1080P decoding
- Support 3 optional decoding cards and up to 18 screens output



TWO-WAY AUDIO

Supports two-way audio to devices and volume is adjustable



COMPATIBLE DEVICES

- Support access of IP cameras, NVRs, centralized storage and NVRs.
- Support 160 channels access via ONVIF and private protocol.

SPECIFICATION

MODEL	AL-NVR5160-24DRAIDHS V2.0
MAIN FUNCTIONS	
Device management	Support management of IP cameras, NVRs and network video encoder/decoders Support configuration of device information and account authority Support detection of device status
Live view	Support auto switch of main and sub stream, live windows can be drag to form a large single window. Live windows can be divided into 4/6/8/10 mode or 1-5/1-7 consist of main/sub stream. The number of screens per row/column can be customized up to 64 as well. Supports electronic zoom, image capture. Supports switch by single channel, group or all channels, users can customize switch plan
PTZ control	Support pan tilt and zoom control including 8 directions control, zoom/aperture/focus settings, preset settings, wiper control and 3D positioning
Video management	Support recording template that users can easily arrange start time, end time, week time and recording duration
Video playback	Support device storage/centralized storage/local storage and multiple method for searching video
Video wall	Support timing video recording, playback, video download, image capture, multi-speed playback in NVR
Event management	Support video wall template configuration and video switch
Intelligent analysis	Support multiple alarm types and linkage of alarm input and output interfaces. Events can be prioritized by importance
Alarm linkage	Support linkage of VCA functions
User management	Support linkage of alarm output, video recording, sound, pop on video wall, e-map, image capture and preset of PTZ
Log management	Support user account management like setting authority and expiration time
E-map	Support recording log like adding, deleting and modifying for each module independently
Two-way audio	Support searching and exporting log information for each module
Decoding	Support using super high-resolution picture as e-map background
Compatible devices	Support google GIS map and different surveillance icons overlay on maps
Max IP Channel Support	Support two-way audio to devices and volume is adjustable
Support Onvif IP Cameras	Support 2 HDMI& 1VGA output interfaces and 18 1080P decoding(Optional)
Group management	Support 3 optional decoding cards and up to 18 screens output (For optional decoding cards, need to confirm before placing order)
Face management	Support access of IP cameras, NVRs, centralized storage and NVRs.
	Support 160 channels access via ONVIF and private protocol.
	Yes
	Support adding, modifying, searching and deleting the organization structure and official authority
	Support up to 50 face recognition cameras connection
	Support up to 5000 face pictures each library
	Support analysis and statistics of face alarm
	Support to search picture by picture and search face picture by time or name
SPECIFICATIONS	
CPU	Intel 64-bit multicore processor
Memory	24GB (3×8GB, 4 memory slots), maximum 64G
OS HDD	32G SSD
Network interface	4xRJ45 self-adaptive 10/100/1000 Mbps network interfaces
Data HDD	Up to 24 disks
HDD type	2.5" or 3.5" SATA
HDD capacity	4/6/8TB enterprise HDD 4/6/8/10TB surveillance HDD
Interfaces	2 USB 2.0 ports in front panel, 2 USB 3.0 ports in rare panel 2 HDMI, 1 VGA 2 RS485, 1 RS232
RAID	8 alarm input, 4 alarm output RAID 0/1/5/6/10/50/60
GENERAL	
Power supply	AC100V~AC240V, 50Hz/60Hz
Dual Power Supply	Optional(Need to confirm before placing order)
Power consumption	Rated power: 800W Peak power: 500W Average power: 300W
Working temperature	0°C~50°C
Working humidity	10%~90%RH
Dimensions	542mm(L)×446.6mm(W)×173.8mm(H)
SOFTWARE	
Management platform	WEB GUI
Management software	IPC access management, Recording file management, alarm linkage
IPC channels	160
User account	100
Middleware adapter	1
Middleware number	1
Icon overlay on map	1000
Person information	10000
Face recognition camera access Maximum	50

SPECIFICATION

ANPR camera access Maximum	25
Access control PAD (ID card) Maximum	70
Face turnstile Maximum	24
Log record 500,000 per 90 days	90 days
Alarm record 5,000,000 per 90 days	90 days
Face Pad record 3,000,000 per 90 days	90 days
Face capture record	2,000,000 per 90 days
Attendance record(1000 people)	365,000 per year

DYNAMIC STATISTICS

* The following listed numbers are peak performance, they may not be supported at the same time

GPS location reported	10/s
Access users	50
Online users	100
Access APP	100
Alarm go off per second	8
Picture performance	Send/Receive 25 pictures/S Less than 550K each picture, up to 18,000 pictures every day

VIDEO PERFORMANCE (PICTURE AND VIDEO STORAGE IN SAME TIME)

Video storage capability	Up to 160 channels (2Mbs, H.265)
Video forwarding capability	Up to 160 channels forwarding and decoding combined (2Mbs, H.265)
Decoding capability	Up to 80 channels in main stream (1080P, 2Mbs, H.265), 100 channels in substream
Video switching	Up to 80 channels in main stream (1080P, 2Mbs, H.265), 55 channels in substream

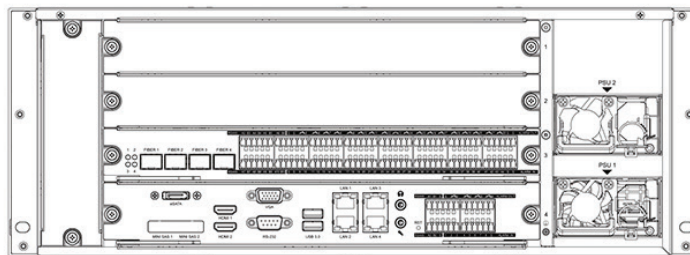
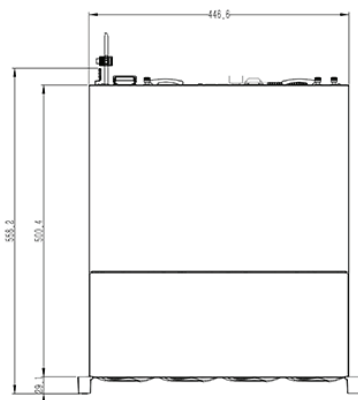
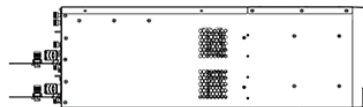
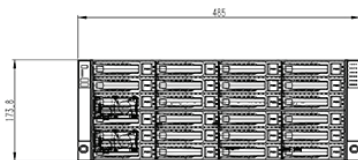
VIDEO PERFORMANCE (VIDEO STORAGE ONLY)

Video storage capability	Up to 160 channels (2Mbs, H.265)
Video forwarding capability	Up to 160 channels forwarding and decoding combined (2Mbs, H.265)
Decoding capability	Up to 144 channels in main stream, 160 channels in substream (1080P 2Mbs H265)
Video switching	Up to 40 channels in main stream, 160 channels in substream (1080P 2Mbs H265)

CLIENT PC REQUIREMENT

Client Requirement	CPU Intel Core i5 or above
Memory	16GB or above
OS	Win 10 (64bit)
GPU	GTX1050 4G or better
Web browser	Chrome for Web GUI, IE 11 for middleware
Network interface	Self-adaptive 10/100/1000 Mbps network interface
Display	1920*1080 or better

DIMENSIONS



ORDERING INFORMATION

AL-NVR5160-24DRAIDHS V2.0

160CH 24SATA Ultra Smart Intelligent RAID NVR



*Product specifications and availability are subject to change without notice.

